

Back to the Future Suite

Violin II

Long Live the Piano!

Roy E. Howard

♩=75 ♩=100

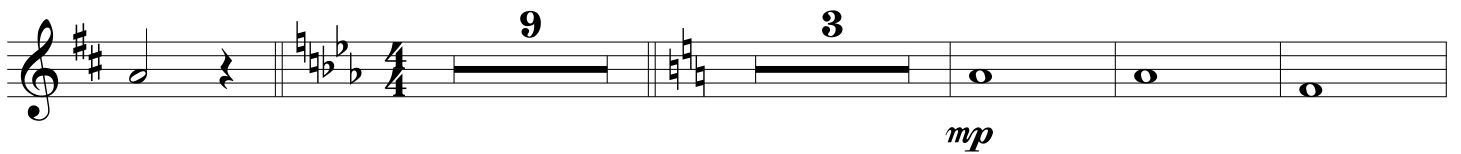
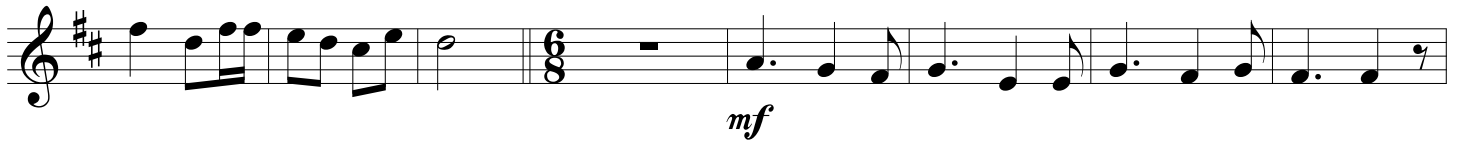
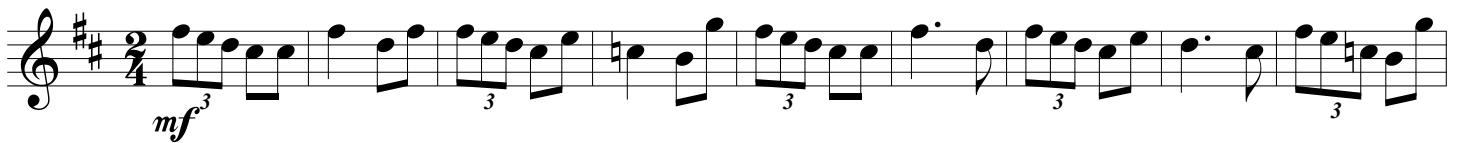
4 2 3

3 8

f

6 4 4 *mf*

mf *mf*



A musical score for the song 'Back to the Future' on page 3, consisting of four staves of music. The first staff begins with a treble clef and a key signature of one sharp (F#). The first four measures are whole notes (F#, G, A, B), followed by a double bar line and a quarter rest. The fifth measure is a half note (C) with a *mp* dynamic marking. The final two measures are eighth-note pairs: (D, E) and (F#, G). The second staff continues with eighth-note pairs: (A, B), (C, D), (E, F#), (G, A), (B, C), (D, E), (F#, G), (A, B), (C, D), (E, F#), (G, A), (B, C), (D, E), (F#, G), (A, B), (C, D). The third staff contains eighth notes: (E, F#, G, A, B, C, D, E, F#, G, A, B, C, D, E, F#, G, A). The fourth staff contains eighth notes: (B, C, D, E, F#, G, A, B, C, D, E, F#, G, A, B, C, D, E), ending with a quarter rest and a double bar line.